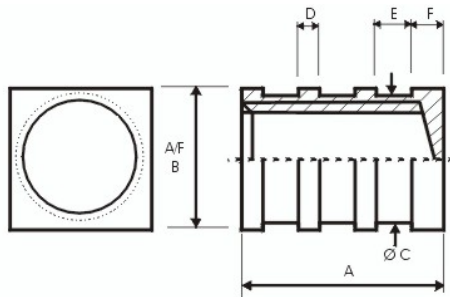


The Rotofit range of inserts is specifically for the rotomoulding industry, and is available in a variety of versions. The square style, with associated deep grooves, provides an extremely large surface area to adhere to, resulting in high torque and pull-out performance.



## SQUARE BLIND VERSION



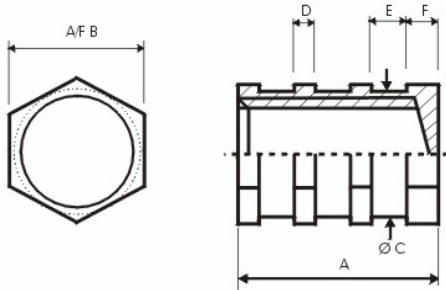
P/NO	THREAD	A	B	C	D	E	F	GROOVES
002114	M4	8.5	6.0	5.4	1.5	2.0	1.5	2
002115	M5	10.0	7.0	6.4	1.7	2.5	1.6	2
002116	M6	10.0	8.0	7.5	1.7	2.5	1.6	2
002117	M6	15.0	8.0	7.5	1.7	2.5	2.4	3
002118	M8	16.0	10.0	9.4	1.7	2.5	3.4	3
002119	M8	19.0	10.0	9.4	1.7	2.5	2.2	4
002120	M10	16.0	12.0	11.4	1.7	2.5	3.4	3
002121	M10	19.0	12.0	11.4	1.7	2.5	2.2	4
002122	M12	19.0	14.0	13.5	1.7	2.5	2.2	4
002123	M14	19.0	16.0	15.5	1.7	2.5	2.2	4
002124	M16	19.0	18.0	17.5	1.7	2.5	2.2	4

Fitsco Industries Ltd, Unit B, Middleblock,  
Knowle Sands Industrial Estate, Eardington, Bridgnorth,  
Shropshire WV16 5JL,

The Rotofit range of inserts is specifically for the rotomoulding industry, and is available in a variety of versions. The hexagon style, with associated deep grooves, provides an extremely large surface area to adhere to, resulting in high torque and pull-out performance.



## HEX BLIND VERSION

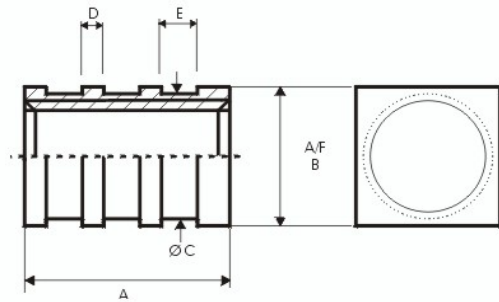


P/NO	THREAD	A	B	C	D	E	F	GROOVES
002125	M4	8.5	8.0	6.1	1.5	2	1.5	2
002126	M5	10.0	8.0	6.1	1.7	2.5	1.6	2
002127	M6	10.0	10.0	7.7	1.7	2.5	1.6	2
002128	M6	15.0	10.0	7.7	1.7	2.5	2.4	3
002129	M8	16.0	12.0	9.8	1.7	2.5	3.4	3
002130	M8	19.0	12.0	9.8	1.7	2.5	2.2	4
002131	M10	16.0	14.0	11.8	1.7	2.5	3.4	3
002132	M10	19.0	14.0	11.8	1.7	2.5	2.2	4
002133	M12	19.0	16.0	13.5	1.7	2.5	2.2	4
002134	M14	19.0	18.0	15.8	1.7	2.5	2.2	4

The Rotofit range of inserts is specifically for the rotomoulding industry, and is available in a variety of versions. The square style, with associated deep grooves, provides an extremely large surface area to adhere to, resulting in high torque and pull-out performance.



## SQUARE THRU VERSION



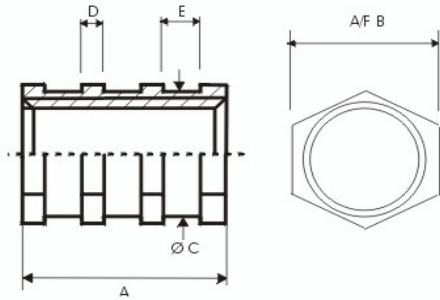
P/NO	THREAD	A	B	C	D	E	GROOVES
002135	M4	8.5	6.0	5.4	1.5	2.0	2
002136	M5	10.0	7.0	6.4	1.7	2.5	2
002137	M6	10.0	8.0	7.5	1.7	2.5	2
002138	M6	15.0	8.0	7.5	1.7	2.5	3
002139	M8	16.0	10.0	9.4	1.7	2.5	3
002140	M8	19.0	10.0	9.4	1.7	2.5	4
002141	M10	16.0	12.0	11.4	1.7	2.5	3
002142	M10	19.0	12.0	13.5	1.7	2.5	4
002143	M12	19.0	14.0	15.5	1.7	2.5	4
002144	M14	19.0	16.0	17.5	1.7	2.5	4

Fitsco Industries Ltd, Unit B, Middleblock,  
 Knowle Sands Industrial Estate, Eardington, Bridgnorth,  
 Shropshire WV16 5JL,

The Rotofit range of inserts is specifically for the rotomoulding industry, and is available in a variety of versions. The hexagon style, with associated deep grooves, provides an extremely large surface area to adhere to, resulting in high torque and pull-out performance.



## HEX THRU VERSION



P/NO	THREAD	A	B	C	D	E	GROOVES
002145	M4	8.5	8.0	6.1	1.5	2.0	2
002146	M5	10.0	8.0	6.1	1.7	2.5	2
002147	M6	10.0	10.0	7.7	1.7	2.5	2
002148	M6	15.0	10.0	7.7	1.7	2.5	3
002149	M8	16.0	12.0	9.8	1.7	2.5	3
002150	M8	19.0	12.0	9.8	1.7	2.5	4
002151	M10	16.0	14.0	11.8	1.7	2.5	3
002152	M10	19.0	14.0	11.8	1.7	2.5	4
002153	M12	19.0	16.0	13.5	1.7	2.5	4
002154	M14	19.0	18.0	15.8	1.7	2.5	4

Fitsco Industries Ltd, Unit B, Middleblock,  
 Knowle Sands Industrial Estate, Eardington, Bridgnorth,  
 Shropshire WV16 5JL,