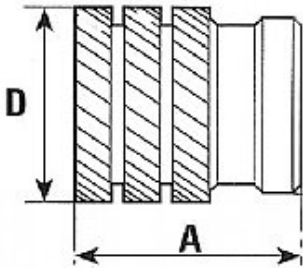


Fitsco offers the Pressfit range of inserts to suit applications where the inserts are pressed-in cold.



UNHEADED VERSION



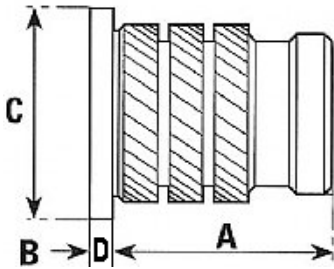
P/NO	PRODUCT CODE	THREAD	A	D	REC. HOLE SIZE	MIN. WALL THICKNESS
01023	F2/B	M2	4.1	3.4	3.1	1.6
00236	F2/B	M2.5	5.3	4.2	3.8	2.0
00037	F2/B	M3	5.3	4.2	3.8	2.0
01411	F2/B	M3.5	6.3	5.0	4.6	2.5
00777	F2/B	M4	7.4	5.8	5.4	2.5
00012	F2/B	M5	8.3	6.6	6.2	2.5
00108	F2/B	M6	9.2	8.2	7.8	2.8
00109	F2/B	M8	9.2	9.7	9.3	3.8
02265	F2/B	M10	9.2	12.7	12.3	5.0

Fitsco Industries Ltd, Unit B, Middleblock,
Knowle Sands Industrial Estate, Eardington, Bridgnorth,
Shropshire WV16 5JL,

Fitsco offers the Pressfit range of inserts to suit applications where the inserts are pressed-in cold.



HEADED VERSION



P/NO	PRODUCT CODE	THREAD	A	B	C	D	REC. HOLE SIZE	MIN. WALL THICKNESS
01429	F2/H-B	M2	4.1	3.4	4.8	0.55	3.1	1.6
00842	F2/H-B	M2.5	5.3	4.2	5.6	0.55	3.8	2.0
00150	F2/H-B	M3	5.3	4.2	5.6	0.55	3.8	2.0
00150	F2/H-B	M3.5	6.3	5.0	6.4	0.70	4.6	2.5
00066	F2/H-B	M4	7.4	5.8	7.2	0.80	5.4	2.5
00043	F2/H-B	M5	8.3	6.6	8.0	1.00	6.2	2.5
00003	F2/H-B	M6	9.2	8.2	9.5	1.30	7.8	2.8
01001	F2/H-B	M8	9.2	9.7	11.0	1.30	9.3	3.8
01673	F2/H-B	M10	9.2	12.7	14.0	1.60	12.3	5.0