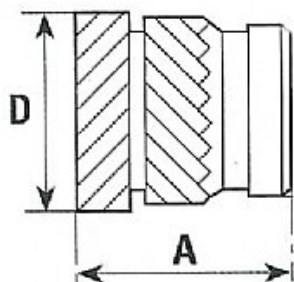


The Heatfit range of threaded inserts is suitable for all types of thermoplastic materials. All inserts can be installed using 'heat staking' or 'ultrasonic' equipment.



## UNHEADED VERSION

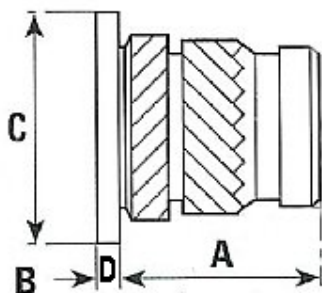


P/NO	PRODUCT CODE	THREAD	A	D	REC. HOLE SIZE	MIN. WALL THICKNESS
00007	F1/B	M2	4.0	0.55	3.2	2.0
00043	F1/B	M2.5	5.8	4.6	4.0	2.3
00655	F1/B	M3	5.8	4.6	4.0	2.3
00050	F1/B	M3.5	7.2	6.4	4.8	2.5
00006	F1/B	M4	8.2	6.3	5.6	2.5
00008	F1/B	M5	9.5	7.0	6.4	2.7
01050	F1/B	M6	12.7	8.6	8.0	3.0
00030	F1/B	M8	12.7	10.2	9.6	3.5
01764	F1/B	M10	12.7	12.3	11.9	6.0

The Heatfit range of threaded inserts is suitable for all types of thermoplastic materials. All inserts can be installed using 'heat staking' or 'ultrasonic' equipment.



## HEADED VERSION



P/NO	PRODUCT CODE	THREAD	A	B	C	D	REC. HOLE SIZE	MIN. WALL THICKNESS
01429	F1/H-B	M2	4.0	3.6	4.8	0.55	3.2	2.0
	F1/H-B	M2.5	5.8	4.6	5.6	0.60	4.0	2.3
00029	F1/H-B	M3	5.8	4.6	5.6	0.60	4.0	2.3
	F1/H-B	M3.5	7.2	5.4	6.4	0.80	4.8	2.5
00077	F1/H-B	M4	8.2	6.3	7.2	1.00	5.6	2.5
00040	F1/H-B	M5	9.5	7.0	8.0	1.00	6.4	2.7
00022	F1/H-B	M6	12.7	8.6	9.5	1.30	8.0	3.0
00357	F1/H-B	M8	12.7	10.2	11.0	1.30	9.6	3.5
01144	F1/H-B	M10	12.7	12.3	14.0	1.60	11.9	6.0